



CORPORATE
PROFILE



PRETON[®]
ENERGY LIMITED
RC: 1668398



Our SERVICES

- Tank/Vessel Cleaning Services
- Solids Control Services
- Drilling/ Production Chemicals Supply Services
- Mechanical Installation
- Maintenance & Materials
- Onshore /Offshore Production Facilities Upgrade
- Procurement
- Marine Services
- Logistics and General Contracts



INTRODUCTION



Preton Energy Ltd, is an oil field engineering services company that is into various oil and gas services being focus on Tank/Vessel Cleaning, Installation and Facility Upgrade, Pipe line/Structural system, Fabrications and other related engineering operation in a manifold that enhance quality service delivery.

Our Mission

Is to be the mechanical industry design/build leader, locally owned, offering the highest degree of technical and operational efficiency for commercial and industrial projects.

To make long-term difference in the industry and earn the trust of our partners and clients.

Our Vision

To be recognized as a Company and partner of choice in the oil and gas industry for delivering quality services on our promises, pioneering new opportunities and approaches and bringing value to the industry, clients and host communities.



MECHANICAL INSTALLATION



The projects that are designed to increase the living standards and comfort in the construction works and constitute the interior of the facility.

Mechanical installation services can be listed as follows.

-  Solar Power Installation
-  Heating Systems
-  Laundry and Kitchen Facilities
-  Plumbing
-  Natural Gas Installation
-  Air Conditioning Installation
-  Ventilation Installation
-  Scientific examination
-  Fire Installation
-  Elevator Installation
-  Compressed Air Installation
-  Medical Gas Installation
-  Steam, Condensate, Hot Water and Hot Oil Installation
-  Mechanical Automation



MAINTENANCE/MATERIALS



In the journey towards reliability, Work Management processes and Maintenance, Repair and Operations (MRO) are intricately connected. As organizations mature in their work planning, material planning becomes essential to successful Maintenance operations, enabling the work to be executed with the right tools in the right place at the right time.



TANK/VESSEL CLEANING SERVICES



Preton provides industrial tank cleaning, Regardless of the size, shape or the material within the tanks, we have experienced personnel, equipped with the apparatus to deliver a safe, quality finish. We pride ourselves on our strategic approach to every tank cleaning project either remotely or with minimum man entry.

Fully Trained, Skilled Workforce

At Preton, our depth of knowledge in confined space, tank and vessel cleaning remains unsurpassed. We have a workforce, fully trained and skilled in the safe working practices

associated with confined space, tank and vessel cleaning. Technical support is provided by our experienced management team.

Tank Cleaning Heads

The use of specialist tank cleaning heads provide a remote cleaning solution allow for tanks and vessels to be cleaned with minimal requirement for man entry. We have a range of specialist cleaning heads which can be configured to meet the entry points of the tank / vessel.

In the event of a man-entry requirement, our highly trained workforce specialises in all aspects of confined space entry and rescue. Equipped with extensive range of breathing apparatus and gas monitoring equipment along

OUR ONSHORE / OFFSHORE FACILITY UPGRADE



Preton capable of executing major construction services especially in the areas of the Management and Operation of Onshore/Offshore Production Facilities /Platforms and the provision of Engineering, Modification and Maintenance Services for these facilities which we have carried out satisfactorily over the years. We also carry out Production Facilities Inspection and Maintenance.

Our Onshore / Offshore Facility Construction Services includes:

- Process Piping prefabrication, installation and testing.
- Tank Fabrication and testing.
- Vessels Installation and testing.
- Pipe Line Construction and test.
- Pipe Line integrity test service.
- Metering and pumping station installation
- Riser repairs
- Oil and Gas Facility Upgrade (Onshore/ Offshore)
- Electrical and Instrumentation Calibration
- Post Weld Heat Treatment service
- Hydrotesting Services
- Cathodic Protection (supply, Installation and Maintenance).



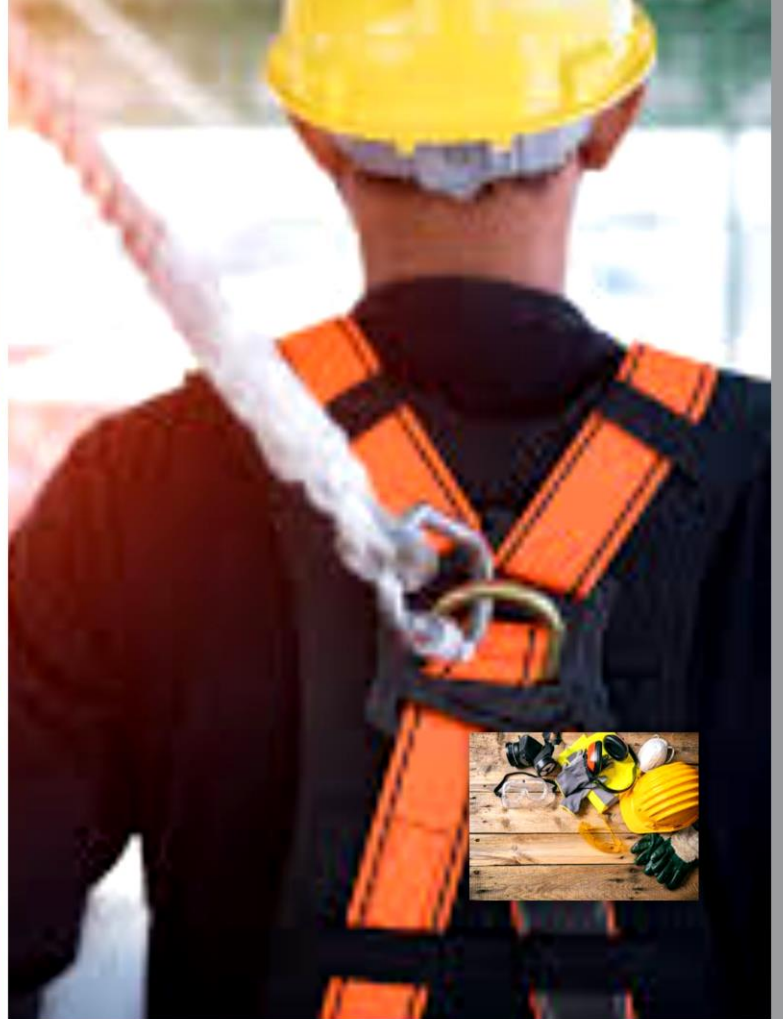


CONSTRUCTION



PEL carried out construction of piping and other engineering system to applicable codes and standard as stated in detail of engineering designed of the project.

Effective planning, efficient design and quality construction were all combined with Preton Construction's team-oriented Construction Management, resulting in the single largest and most successful construction projects.



SAFETY



The following guidelines are implemented as part of PEL will commitment to the safety and health of all persons involved in the operations, being an integral part of all management objectives and is an essential part of the individual objectives of each employee. Also elaborate on the various procedures of every activity to prevent and control accident in the course of executing any project.

PEL educate our employees the safest method to carry out any project operation.

PEL identify safety training requirement/ necessary drills to cope with any emergency.

We analyze risk related to a project before commencing, to ensure safety through all the project Stages.

We ensure that both our office and field workers obey all caution sign at any restricted areas in places like; project site, factory, workshop etc.

We educate our worker on fire escape, how to quench fire from the source, and direction through which fire could be attack.



PIPE FITTINGS

Pipe fittings are attachments placed on pipe end, which provide flexibility in piping system. These are commonly used for changing the direction of flow, distribution, increase or decrease the flow capacity and interconnection.

The commonly used pipe fittings are;
Elbow, Bend, Return, Tee, Cross, Reducer, End Cap, Plug, Nipple, Union, Coupling, Boss, O'let Etc.

FLANGES

Pipe flange is a disc, collar or ring that attaches to pipe. Flanged joints are made by bolting together two flanges with a gasket between them to provide a seal. It can also be defined as a ring that is usually provided with holes for bolts, and screwed or welded over the end of a tube or pipe to permit other objects to be attached to it. It also provides easy access for maintenance, cleaning, inspection or modification.

There are various types of flanges used in piping systems are slip-on pipe flanges, weld neck pipe flanges, blind pipe flanges, lap joint pipe flanges, threaded pipe flanges, socket-weld pipe flanges. Spectacle blinds, spacer and spades are also used along with flanged piping systems.

PIPE SUPPORTS

Pipe supports are piping components designed to support or elevate pipe from a base structure for vertical and horizontal arrangement. Pipe guides and slides are designed to allow longitudinal movement due to thermal expansion and contraction of pipe. Shoe supports, U Clamps, axial stops, hold downs, spring supports, are examples of piping supports.



PIPING MATERIALS



The material which pipes is manufactured often form the basis of choosing any pipe for a specified piping operation.

Materials that are used for manufacturing pipes include:

- Carbon steel
- Low temperature service carbon steel
- Stainless steel
- Nonferrous metals, e.g. cuprous-nickel
- Mild steel etc.



PRESSURE TESTING



PEL will ensures that testing procedures are prepared in accordance with project specification and codes that is reviewed and approved by client.

All pressure testing and visual inspection results shall be recorded, if required third party shall be nominated to witness the pressure testing.

PEL Quality assurance inspector will approve the correct procedure to apply and if any non conformity it will be reported for corrective measures.

Quality control engineer will witness the pressure testing, conduct required test at pressure holding period and approved.

The fabrication supervisor will prepare a pressure testing record and attach the pressure chart, which

WELDING CONSUMABLES



We also provides Welding Consumable to our clients with good measures based on the operations and standard products.



WELDING EQUIPMENT



PEL will ensure that all welding equipment is operated on the valid pre-mob certificate and Safety precautions as required in quality management in prior to client requirement.

All welding equipment will be periodically checked by the maintenance department.

All welding cables, grinding machines, gouging torches, SMAW and GMAW torches, cutting equipment and other accessories will be kept in good order by periodic maintenance.



NON DESTRUCTIVE TESTING CONTROL



All non destructive testing shall be done by an approved third party nominated by the client.

Prior to appointing any third party the client's approval shall be obtained.

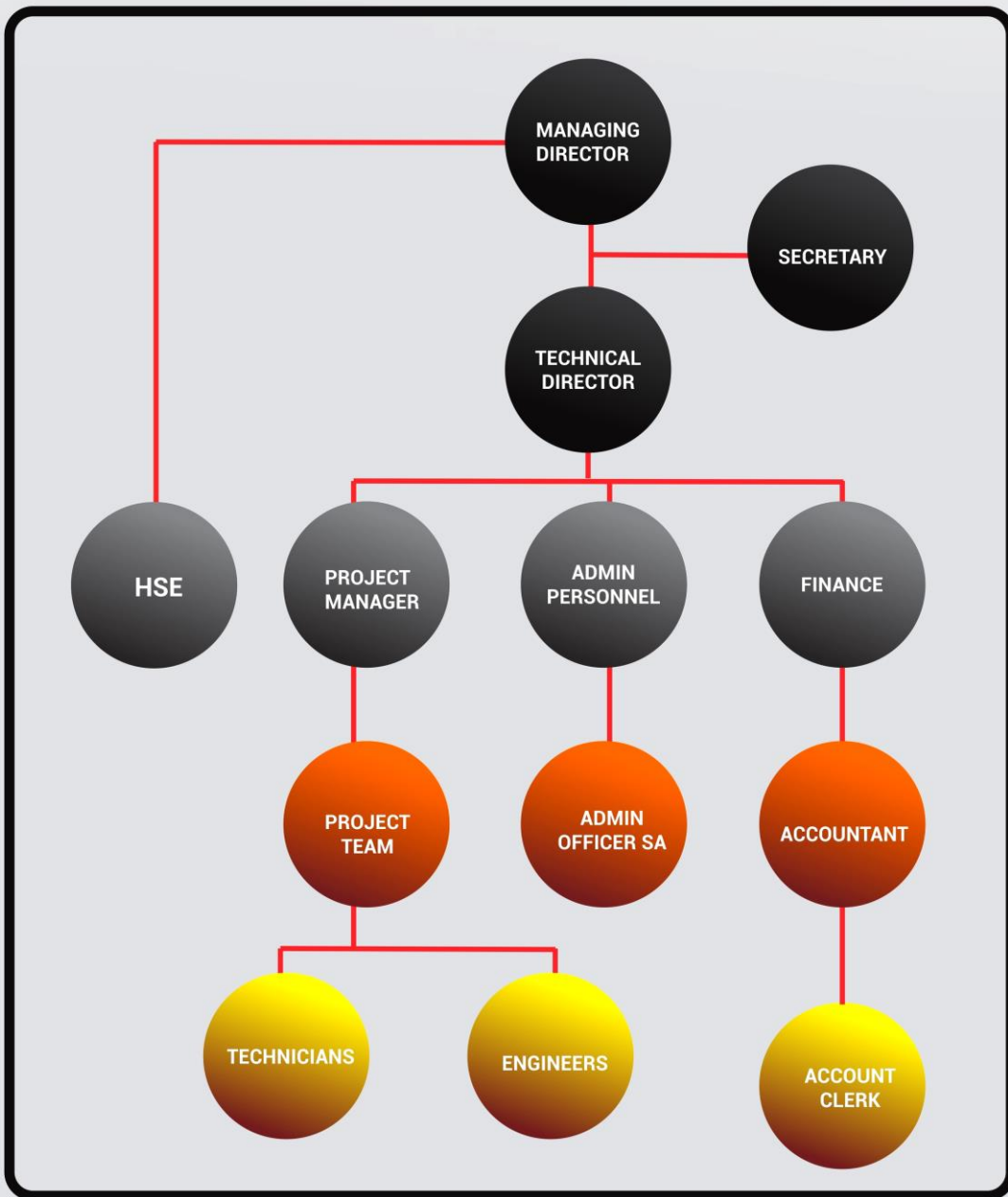
Any failure and observation occurred during N.D.T shall be recorded in the non conformance report and corrective actions shall be taken by the QA/QC engineer.

N.D.T inspection shall be carried out by the third party for conformity.

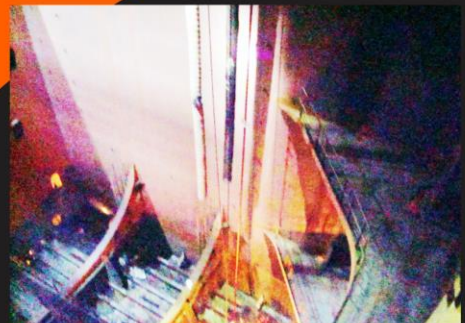
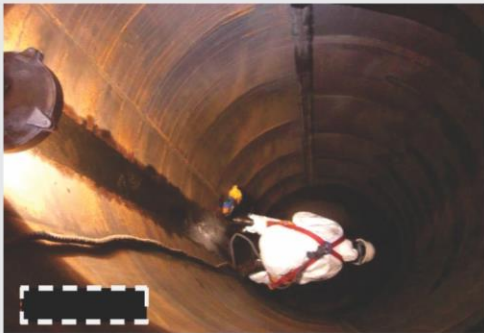
All the non destructive testing reports shall be forwarded to the client with the final documentation.



ORGANOGRAM



SITE PHOTOS





PRETON ENERGY LTD have the experienced personnel and Solids control Equipment with the effective performance that remove drilled solids from the drilling mud which acts as a key factor to have good mud properties. Solid and particles that are not removed during the circulation will remain in the system and lead to reduction of size that may increase the difficulty on removing process using mechanical solid control equipment (SCE). Mud properties must be maintained within the acceptable specification to allow efficient cutting transport to surface. Quantities of high solid content present in mud always perceived as a vital factor affecting the operation efficiency and equipment wear issues. Ineffective solid control system and inadequate understanding of mud properties create additional risk and uncertainties to downhole condition.



As an organization, we understand only the best can help us in delivering our projects on time as such deliberate effort is on hand to ensure only up to date equipment are mobilize for all our projects. Project equipment template shall be issue before pre-mob.





WORK MAINTENANCE



There are many different types of work done in a typical plant or facility, including operations work, preventive maintenance, demand work, reactive maintenance, capital projects, corrective maintenance, inspections, and janitorial services. Indeed, our maintainers and technicians are experts on a wide variety of tasks. They're cross-trained in multiple disciplines, across multiple departments.

Most maintenance work can be anticipated, and therefore work plans on the Preton Energy Ltd can be created well in advance. Work plans outline work procedures, performance and quality standards, spare parts and special tools required, safety procedures, and relevant technical drawings. Once maintenance work is initiated, the most appropriate work plan can be attached or a work request can be auto-filled for approval and scheduling. If necessary, the work request can be edited to fit the current situation.

NON-MAINTENANCE WORK



If maintainers or contractors aren't doing the maintenance work above, then, by definition, they must be doing non-maintenance work. Sample categories for non-maintenance work include the following.

1. Capital projects: Maintainers can create, modify, or install assets, thereby initiating a capital project.

2. Demand work: Sometimes maintainers or contractors are asked by management, engineers, or others to help with a series of non-maintenance tasks that are too small to be capital projects. For example, suppose a production supervisor to move a fixed work station from Point A to Point B. A work order ensure the job is appropriately planned and managed.

number of cases considered should be initiated to

3. Cases: One of the most often overlooked categories of non-maintenance work is handling cases, also known in some industries as anomalies, events, incidents, or simply surprises. Although work is 100% planned, it is not always easy to forecast what maintainers will face day to day, especially anomalies such as accidents, unexpected failures, near misses, and jobs that took much shorter or longer to diagnose and repair. Work that stems from cases, such as cleaning up an environmental spill or repairing a safety railing that failed to prevent an accident.

4. Operations work: We provides equipment setup, or for operators who do maintenance work, such as minor lubrication and adjustments. Standing work orders can be used to simplify the administrative hassle, as long as you identify the asset, person doing the work, type of work done, labor hours consumed, and parts used.

5. Non-productive work: There are other significant activities done by Preton Energy Ltd that may be useful to track, such as attending meetings, travel time for a mobile workforce, and setup and cleanup. These activities can be planned and better managed using our standing work order.



Experience counts when it comes to handling complex projects and movements of oversized and heavy-lift cargoes. Managing complex transportation for large scale projects requires experienced, intelligent and knowledgeable personnel who are committed to researching all options, investigating each detail, surveying and identifying potential obstacles, physical and non-physical, and reacting to extraordinary circumstances with quick and decisive actions.

Our approach is to break down project logistics and transport into essential elements, and then to assign direct supervision over each. Advance trips by our Projects Operations Specialist to the key points in the project corridor ensure that Preton Energy Ltd Logistics has the knowledge required.





Trust isn't given; it's earned. By consistently delivering on our promises, whether to our colleagues, partners or shareholders, we build successful relationships that are built on accountability and Mutual respect. This is essential to our long-term success.

PRETON ENERGY LTD. conduct business in a fair, ethical and lawful manner worldwide, and we associate with business partners (customers, suppliers, subcontractors and financial institutions) that share this approach. As a company and as individual employees, the fundamental values that we will not compromise are:



SAFETY

Nothing is more important to us than HSE.



INTEGRITY

We strive to uphold the highest ethical standards in all operations.



EXCELLENCE

We take great pride in the quality of our work, and it shows.



INNOVATION

We constantly strive to find ways to improve everything we do.



POTENTIAL

We develop and support each other so that every employee can exceed his/her potential.



ACCOUNTABILITY

We take our responsibilities seriously and we expect the same of others.



HONESTY

🏠 **179 Abuloma Road, Port Harcourt**

✉ **pretonenergyLtd@gmail.com**
info@pretonenergy.com

☎ **+2348073497119, +2348035561738**

OUR CLIENTS

ITS Drilling Services, Real Accord Nigeria Ltd, Comprehensive Remediation Technologies Ltd, Southwest Design Africa Ltd, Enageed Resource Ltd, Vookst Energy Ltd, Prime Sources Ltd, Swire Oil Field Services, Ceal Nig. Ltd.

www.pretonenergy.com

Our
Foreign
Partners:

